

Fast, accurate & flexible. Bid more, win more.

aSa[®] Estimating

e^x

aSa Estimating *e^x* is designed with speed and accuracy in mind. Experience a new level of bidding success and profitability – put aSa's powerful, yet easy-to-use tools for takeoff and pricing of rebar, accessories, and labor to work for you.

- **Estimate faster**

Take off by structure, rather than one bar at a time. Automatically calculates standard hooks and laps.

- **More accurate**

Each entry is checked for errors as it is keyed in. Calculated lengths and weights are displayed for visual verification.

- **Get organized**

Group your estimate into sections by bid item or by structures, such as foundations, walls, and footings.

- **Estimate placing labor requirements**

Based on estimate summary information and settings that you define, the program will automatically calculate man-hours and costing associated with material installation.

Developed by Applied Systems Associates, Inc., aSa Estimating allows you to take off directly from a set of printed or electronic plans to the computer keyboard – no transcribing to and from paper, no manual calculations. All entries are checked for errors and converted to pieces, lengths, and weights automatically as they are entered. Reports organize, summarize, and price material so you can make a successful bid. All pricing is set up by you, and the estimate can be structured to satisfy both the estimator's needs and the bid requirements.

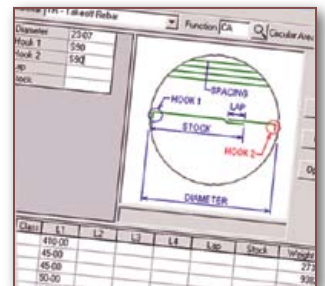
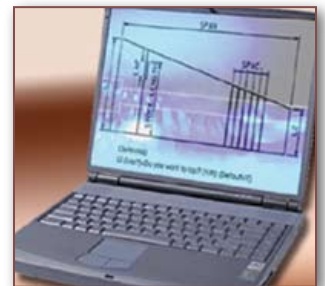
Integration and intelligence

aSa uses Microsoft[®] database technology to store, retrieve, and manage your estimate information. In a network environment, database tables are accessible to other aSa applications, allowing for integration across your entire organization. For example:

- Default information set up prior to estimate creation is automatically loaded into the estimate, decreasing setup time.
- Weight summaries created by Estimating can be used by Rebar Financials modules to price your jobs and change orders.
- After you win the contract, defaults set up in Estimating can be used by Rebar Financial modules to price your job and change orders.
- Advanced reporting lets you track estimated versus detailed, shipped, and billed weights for your projects.

The Estimating Environment

aSa designed the Estimating Screen for rapid entry. In fact, you can enter almost every item entirely from the number keypad. Each entry that you make is automatically calculated and displayed in a floating answer window that includes pieces, extended lengths, and weights.



- **Estimate rebar and everything else**

aSa Estimating handles rebar, plain round steel, mesh, end preps, and other accessories.

- **Handle any project's requirements**

Stock and lap lengths, clearances, and units of measure are easily defined on a job-by-job basis.

- **Design your own interface**

aSa lets you customize your own shortcut keys for faster entry. You also control how takeoff fields and grid items display.

- **Eliminate tedious calculations**

The program automatically calculates material required for common structure types, such as linear, rectangular, and circular areas, varying bars; tie configurations; galloping stirrups; and spirals. Plus, you can create your own formulas to handle other structures.

Functions and Formulas

More than a dozen estimating functions for common structure types are built into the system, allowing you to automatically calculate the necessary stock and piece-out bars for linear areas, rectangular areas, varying bars, column verticals, circular functions, tie configurations, and spirals. When you select a function, its illustration automatically displays on-screen for your reference.

Additionally, you can create your own functions. Simply set up a calculation formula, then later plug in values based on the details of the project. Use your formulas over and over again to save valuable estimating time. No need to manually calculate quantities either, simply enter span and spacing — even custom zone and variable spacing — and the program will automatically determine the correct number of pieces.

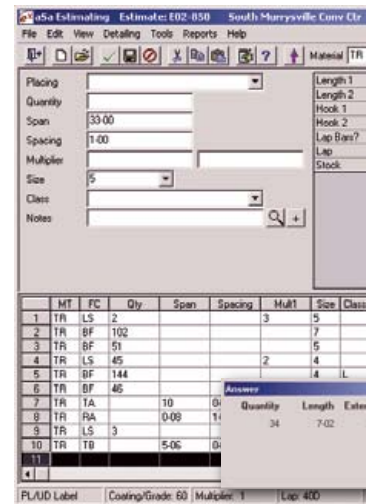
Smart Interface

An expandable grid shows you all of the entries you've made in a simple row and column format. Editing functions such as Cut, Copy, Paste, and Search utilities are available with a right-click of the mouse. Grid items and material entry fields are completely customizable — display the fields you want to see, hide the fields that you use less often. You can even program your own hot keys to use for specific estimating functions.

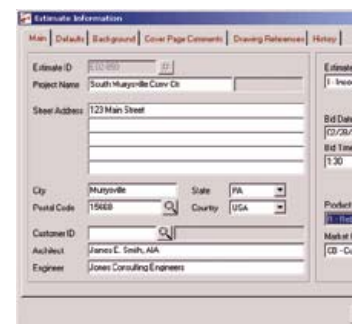
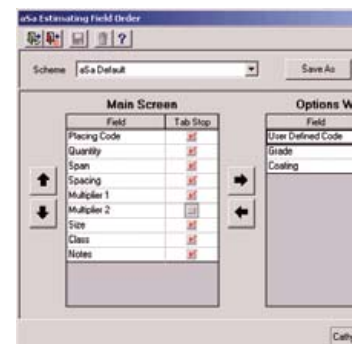
You'll never need to enter the same takeoff information twice. A variety of tools, such as Get Estimate Data, Estimate Combine, and Save As, allow you to easily share data among multiple estimates and multiple estimators.

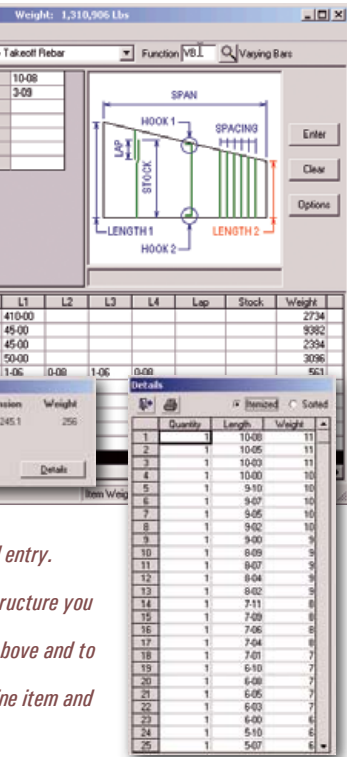
Reporting and Pricing

aSa provides a great deal of flexibility in organizing your estimate. On one level, you can break the project up into structures such as Foundations, Walls, and Footings. At the same time, you can assign items to bid groups or bid items based on the terms of the contract. Placing and user defined codes provide yet another way to organize estimate information. aSa's comprehensive Estimate Report provides you with subtotals for each grouping of material, and view options



The Estimating Screen is designed for rapid data entry. Illustrations display based on the type of structure you are entering. Answer windows, like those shown on the right, show calculated totals for each line item to help to immediately catch errors.





allow you to see the same estimate sorted different ways on-screen. Using aSa's special report viewer, you can instantly jump to any section of the estimate, or use search tools to find a particular line item.

Pricing values that you define are applied to material sub-totals and totaled on the report. The Estimate Costing screen allows you to easily manipulate and fine-tune the bid for any job. Commonly used pricing categories – like size, grade, and coating extras; engineering extras; and freight in and out – are built into the system. Plus, you can create custom pricing items for overhead, profit, or any category that you dream up – the program will handle them.

The system's Placing Labor utility applies labor rate values that you define to your estimated material to calculate man-hours and installation costs. Screens allow you to review and revise placing labor values to develop a successful bid for material *and* installation services.

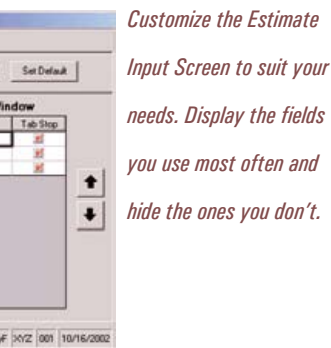
Another helpful reporting feature is the Bar List Summary, a listing of all sizes and lengths of steel on the estimate. This section of the report is especially beneficial for planning production and for ordering material for upcoming jobs.

System features also allow you to record, track, and report estimate history information, and to import and export estimate data for easy transfer to other PCs or locations.

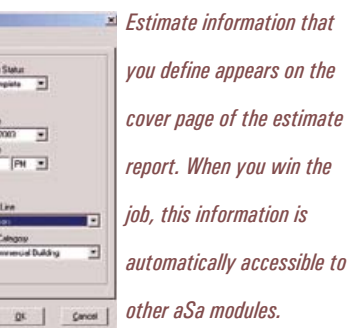
The aSa advantage

aSa Estimating is developed by Applied Systems Associates' experienced team of computer professionals and rebar industry experts. aSa's knowledgeable staff provides training services and top-notch technical assistance for Estimating and for all aSa products. With more than 35 years of experience as a reinforcing steel software provider, aSa is dedicated to creating, supporting, and continuously improving the world's best rebar software.

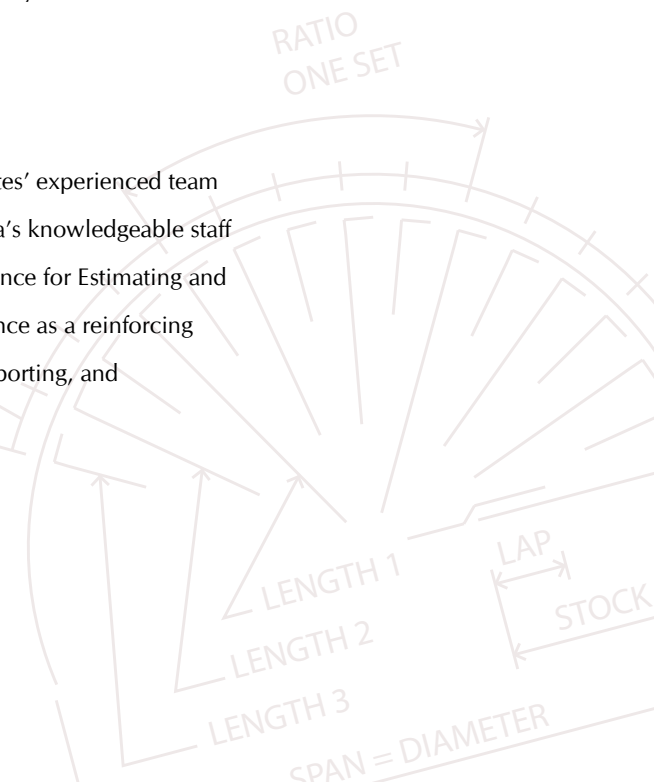
- **Make changes in seconds, not hours**
Edit functions like cut, copy, and paste allow for quick and simple modifications.
- **No need to re-estimate add and deduct alternates**
Special editors let you include, exclude, and hide sections of your estimate on the fly to easily accommodate bid requirements.
- **Create the reports you want to see**
With aSa's flexible report options, you control how material is sorted, sub-totaled, priced, and summarized.



Customize the Estimate Input Screen to suit your needs. Display the fields you use most often and hide the ones you don't.



Estimate information that you define appears on the cover page of the estimate report. When you win the job, this information is automatically accessible to other aSa modules.





What our clients are saying about aSa Estimating

aSa Estimating is the best I have seen, and I have 35 years in the reinforcing steel business. It is very fast to learn, very easy to use, and very helpful with its macro formulas and breakdowns.

Jack Benoualid, Estimator, Treasurer
Century Steel, Inc., Las Vegas, Nevada

We use aSa Estimating corporate-wide. It has improved our overall efficiency in bidding jobs. Plus, new features in software updates are well designed. It's super!

David D'Avignon, Division Manager
Gerdau AmeriSteel, Dania, Florida

As a small fabricator, I questioned the value of an estimating program for our firm. After accepting the aSa challenge as to the value of their program, I can't imagine ever doing without the program as it has decreased my overall bidding process time and increased my available management time.

Mark Kulzer, President
Klein Reinforcing Services, Spencerport, New York



For more than 30 years, Applied Systems Associates, Inc., has been an innovator in rebar software technology. aSa's "Complete Rebar Solution" automates nearly every step of the reinforcing steel process. Methods, procedures, and presentation practices developed by aSa have become standards in the rebar industry. More than just a software developer, aSa prides itself on providing complete solutions, including hardware, networking, and information technology services, as well as top-notch product support from aSa's large in-house team of computer and industry experts. aSa is a Microsoft Certified Partner and supplies business solutions from Sage Software, Inc., and engineering solutions from Bentley Systems, Inc. — including the CAD design package MicroStation®. aSa also develops custom multimedia computer-based training applications and provides a comprehensive line of paper forms and office supplies.

- Estimating
- CAD/Detailing
- Bar List
- Scheduling
- Computer Shearing
- Tags
- Equipment Interfaces
- Opto-Shear Console
- Bar Coding
- Material Tracking
- Inventory
- Contract Management
- General Ledger
- Accounts Receivable
- Accounts Payable
- Payroll
- Human Resources
- Fixed Assets

Applied Systems Associate, Inc.
5270 Logan Ferry Road
Murrysville, PA 15668 USA
1.800.CALL.ASA
1.800.225.5272
724.733.8700
724.325.5553 Fax
www.asaHQ.com
www.asarebar.com

